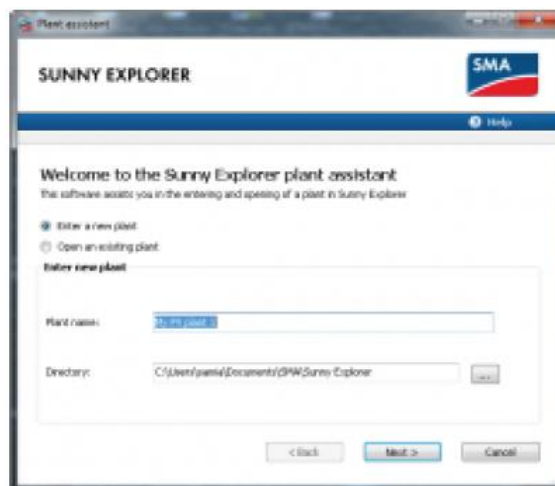


Entering Grid Guard Code using Sunny Explorer

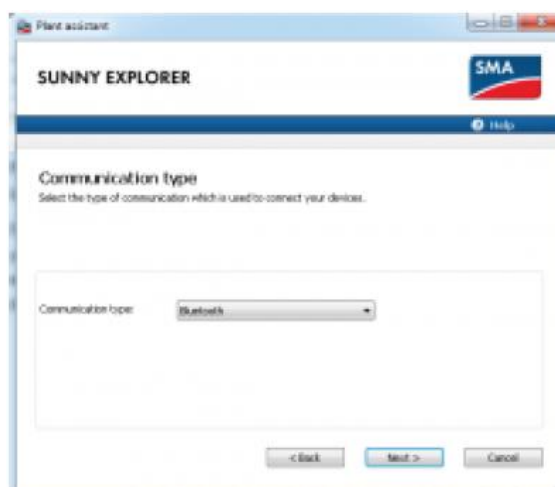
1. Install Sunny Explorer on your laptop (with Bluetooth)
2. Run Sunny Explorer application



3. Select the new plant and enter the plant name and press the next >



4. Select the Bluetooth option then press next >



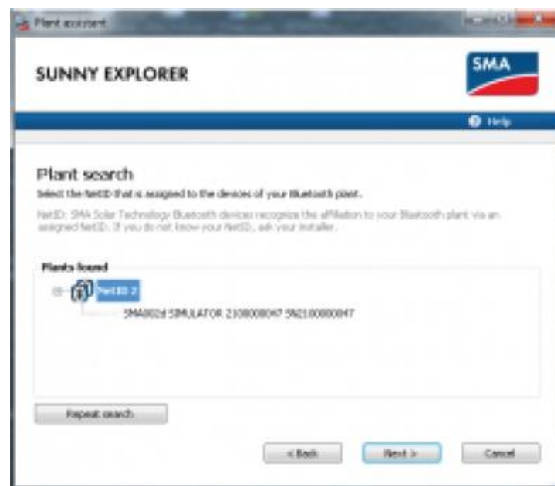
5. Select the Net ID in which the inverter is assigned



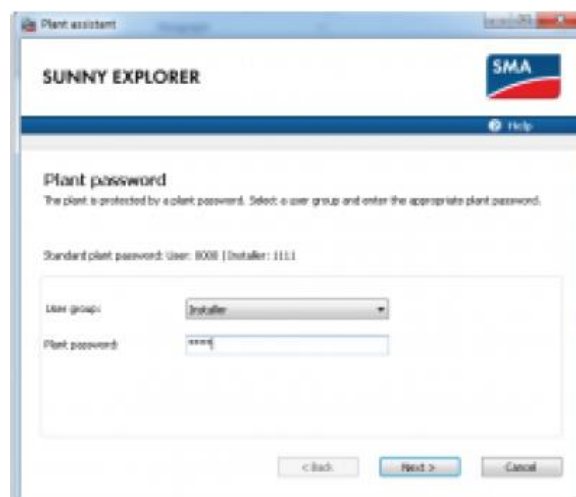
6. On the Net ID press the plus symbol (+)



7. Select which inverter you would like to change the grid setting and press next

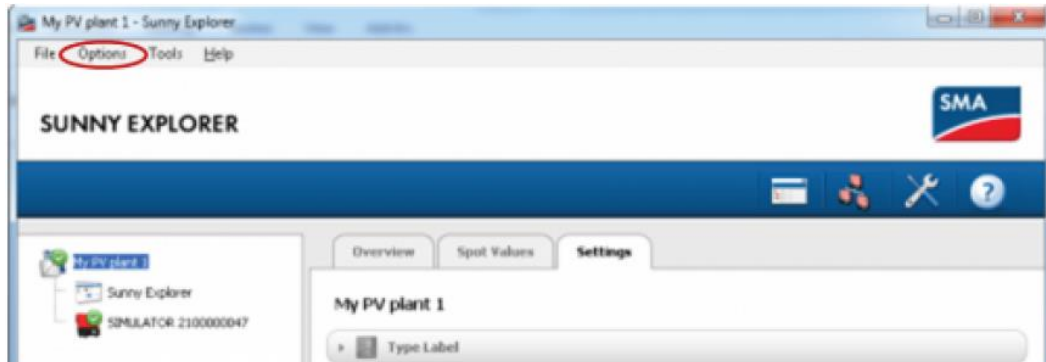


8. Select the installer user name and the password 1111 and press next >





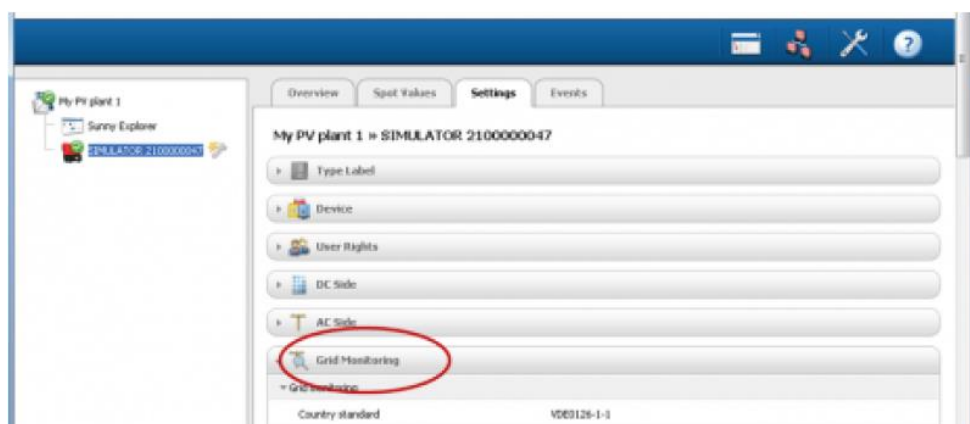
9. On top left side of the screen press Option and select SMA Grid Guard and enter the Grid Guard Code number



10. When the symbol wrench appear (in encircle) on the inverter serial number you can change the grid setting



11. Select the inverter you wish to access and press the Setting of inverter.
12. Select Grid Monitoring, at the lowest portion you will find the Edit button.



13. From here you can select the country standard you want to use or the parameter you want to change.
14. Do not forget to Save the parameter you entered.